


|   |   |                  |
|---|---|------------------|
|  | <b>Shri Manibhai Virani and Smt. Navalben Virani Science College</b><br>An Autonomous college affiliated to Saurashtra University, Rajkot | NAAC – Cycle - 3 |
|   |   | Criterion- IV    |
|   |   | Metric - 4.2.1   |

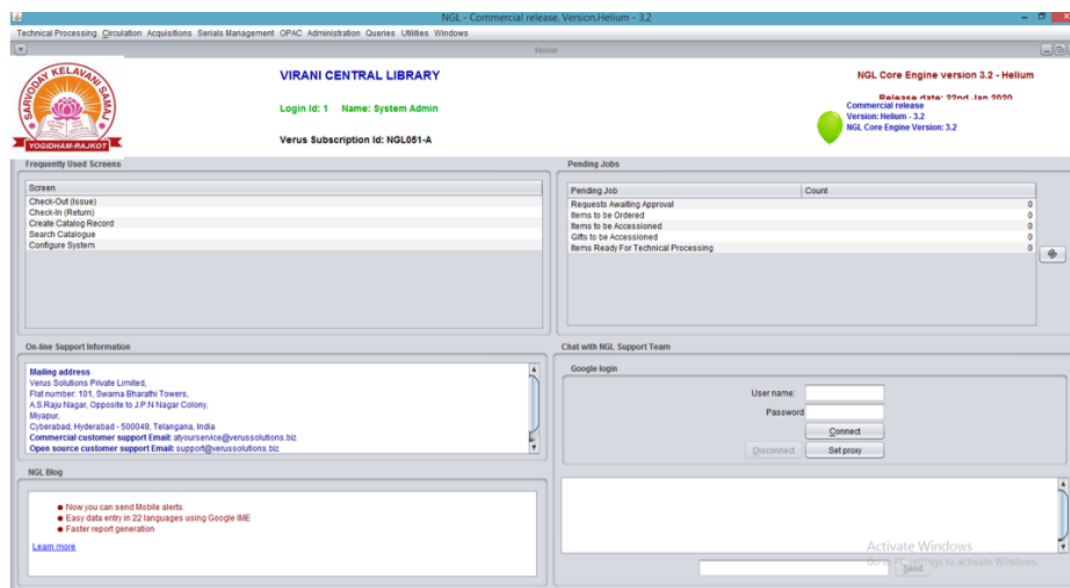
|              |   |
|--------------|---|
| <b>4.2.1</b> | <b>Additional Information Modules of the ILMS – NewGenLib</b> |
|--------------|---|

## ILMS – NewGenLib

Functional modules are completely web-based. Uses **Java Web Start™** Technology

- Compatibility - Complies with international metadata and interoperability standards: **MARC-21, MARC-XML, z39.50, SRU/W, OAI-PMH**
- Uses chiefly **open source** components
- Scalable, manageable and efficient
- **OS independent** - Windows and Linux flavors available
- **z39.50 Client** for **federated** searching
- Internationalized application (I18N)
- **Unicode 4.0** complaint
- Easily extensible to **support other languages**
- Data entry, storage, retrieval in any (**Unicode 3.0**) language
- **RFID integration**
- **Networking** – Hierarchical and Distributed networks
- **Automated email/instant messaging** integrated into different functions of the software
- Form letters are configurable and use **XML-based OpenOffice templates**
- Extensive use of **set up parameters** enabling easy configuration of the software to suit specific needs, e.g., in defining patron privileges
- **Supports multi-user** and multiple security levels
- Allows digital attachments to metadata

Figure 1: The Home page of the ILMS





## Technical Processing (Cataloging)

### Import Bibliographic data

- From other libraries' OPACs
- Primary or Original Cataloging
- Provides 3 different templates for Cataloging: Simple, General and MARC21 Templates
- Compliant to MARC21 for Bibliographic, Authority and Holdings Data
- Supports all material types (By MARC21)
- Open Archive support (OAI-PMH protocol compliant)
- Attach digital content along with catalog record
- Customizable MARC21 templates and Search indexes

Figure 2: ILMs Technical Processing Menu

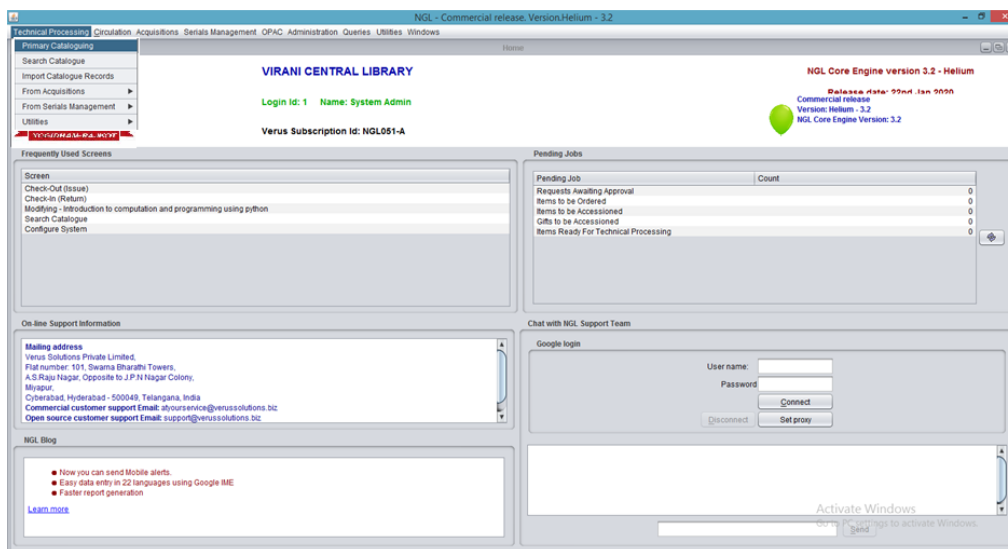
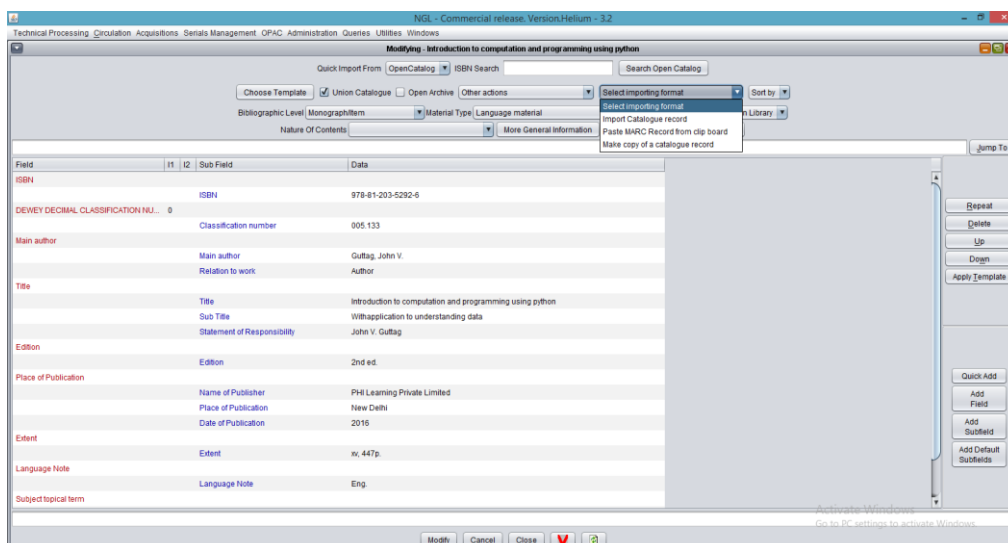
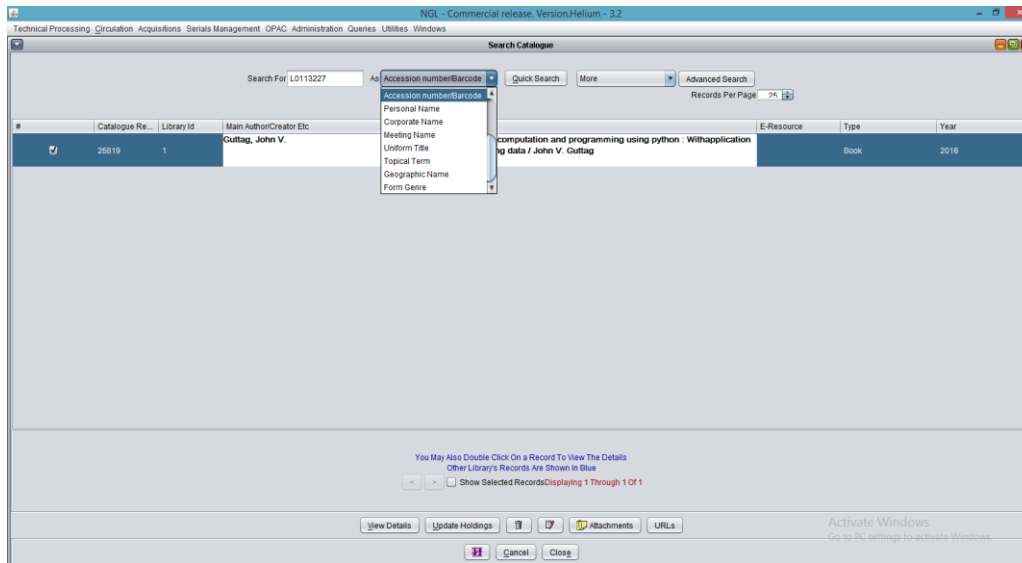


Figure 3: ILMs Cataloguing Module



- Search catalog
  - Search catalog through various system defined Indexes
  - Library can also define custom indexes
- Cross walks available meta data standards like MODS 3.0 and Dublin Core
- Technical Processing of items received through Acquisitions and Serials Management

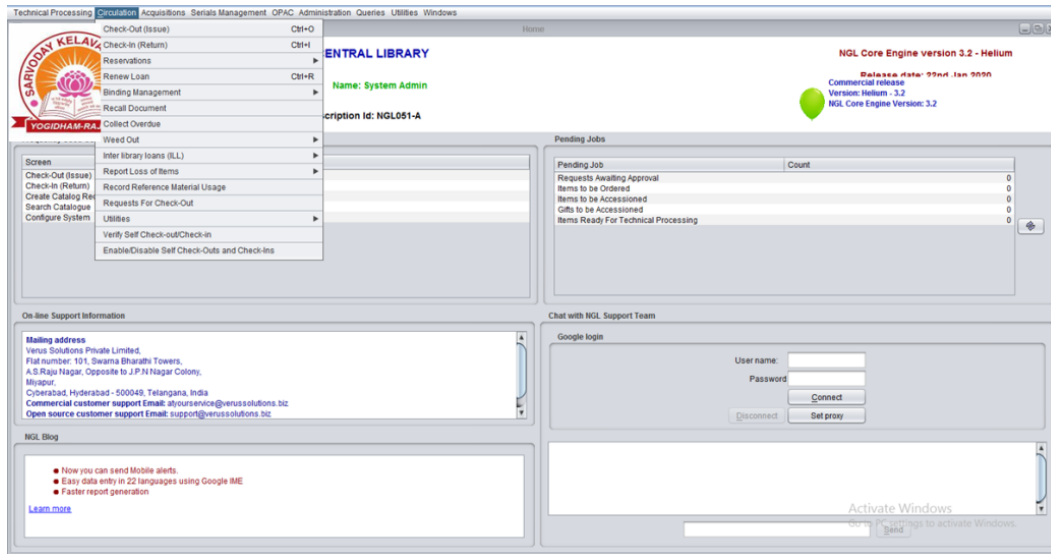
Figure 4: ILMS Technical Processing Menu



### Circulation

- Check out (Issues)
- Check in (Returns)
- Reserve items
- Recall items on loan
- Renew items on loan
- Inter Library Loans management
- Process items lost
- Weed out process
- Binding management
- Automatic overdue notices and reminder for renewals
- Emails and SMS facility

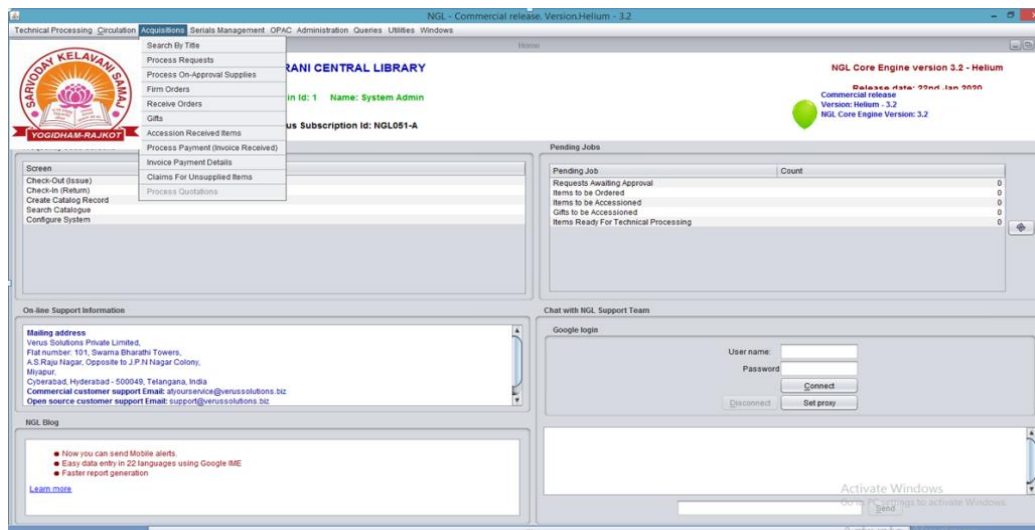
Figure 5: ILMS Circulation System



## Acquisitions

- Request process (suggestions from users)
- Process On-approvals from Vendors
- Raise Orders
- Receive orders (Invoice and Item processing)
- Accession received items
- Process payments
- Budget management
- Record payment details
- Claims for items not supplied
- Solicited and Unsolicited gift processing
- Quotation process (Request for quotations, Generate comparative statements)

Figure 6: ILMS Acquisition System

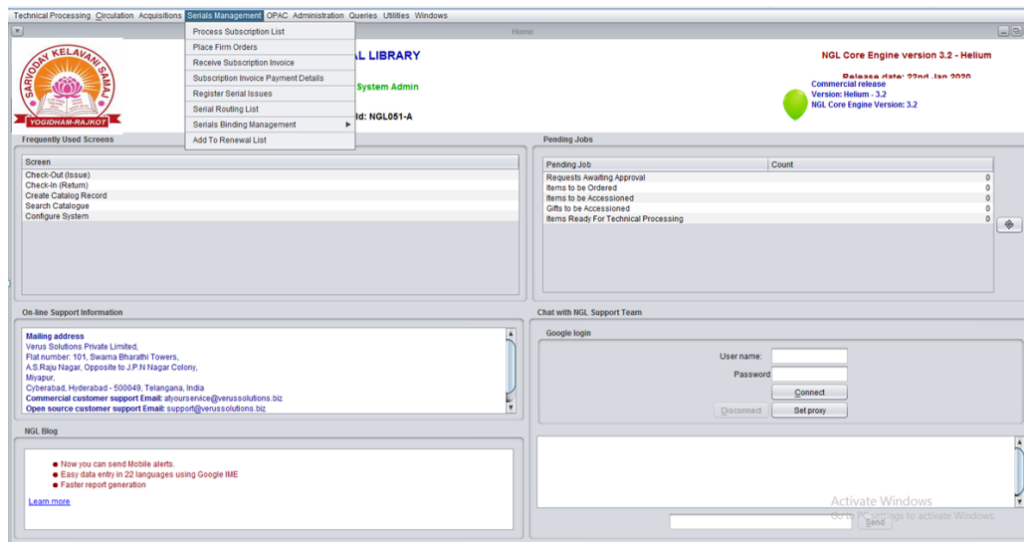




### Serials management

- Process subscription list
- Raise firm order
- Receive Invoice
- Register (Check-in) serial issues (manages even Combined issues, Supplement issues, Special issues, out-of-turn receipts, Indexes, Delayed issues, No longer available issues)
- Binding Management
  - Preparation of Logical lists and Physical lists
  - Raising binding orders
  - Accessioning Bound Volumes
- Auto-claim (Reminder) generation for 'Not received' issues

Figure7: ILMS Circulation System



### Web OPAC

- Various types of searches
  - Free text (Google like search)
  - Basic
  - Advanced
  - Expert
- Reserve items on line and Cancel reservations on line
- Renew items on line
- View circulation transactions transacted and user privileges by the user on line
- Top stories (View headlines through RSS feeds configured)
- Define SDI (Selective Dissemination of Information) profile
- List of new arrivals
- Suggest new books to be acquired on line
- View special collections in the library.

- Supports Vufind OPAC system (<http://www.vufind.org>)

Figure 8: ILMS WebOPAC

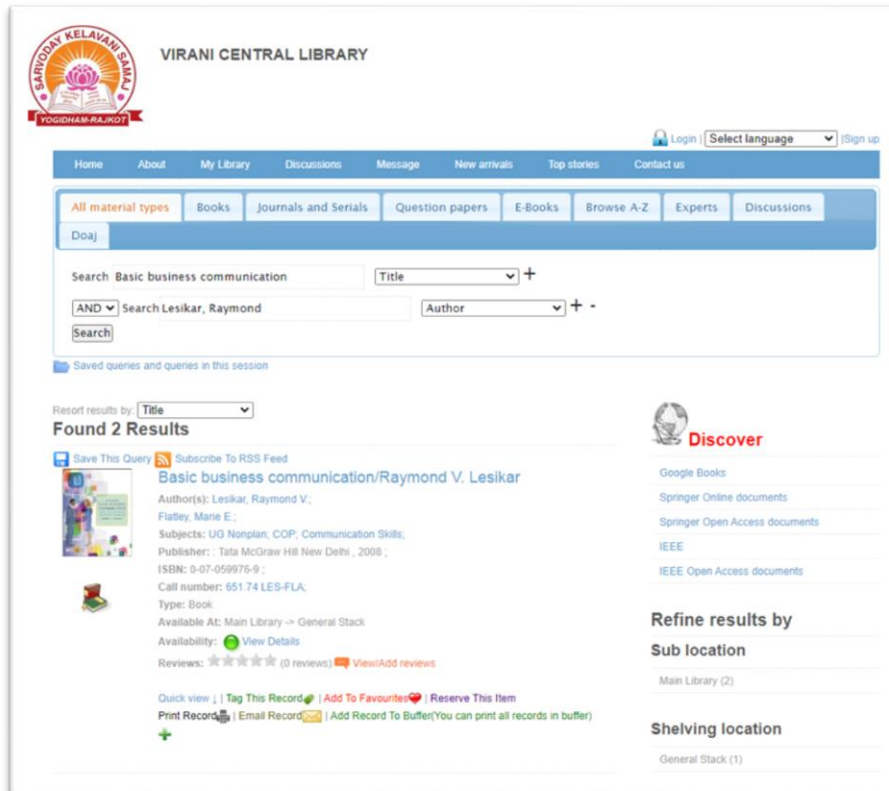
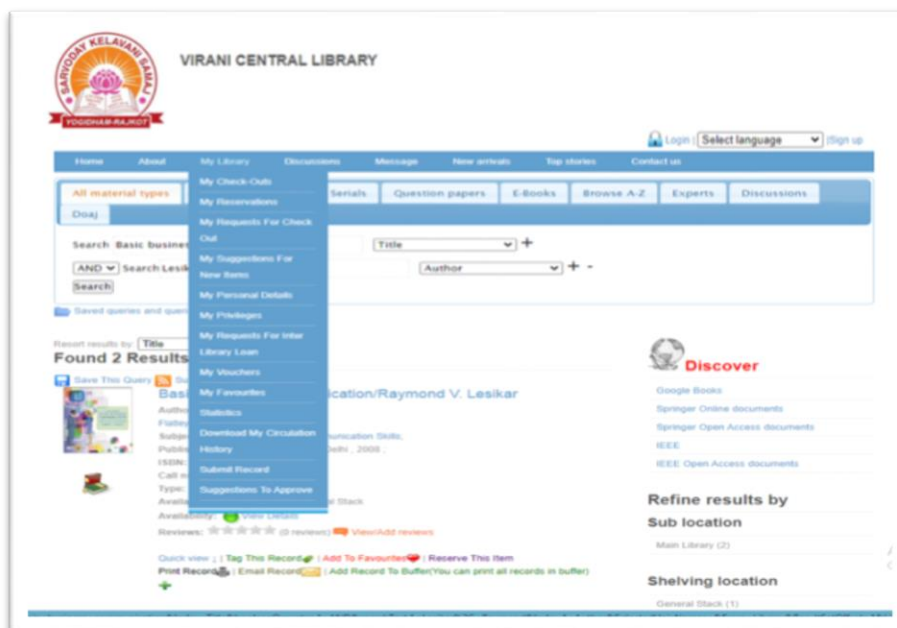


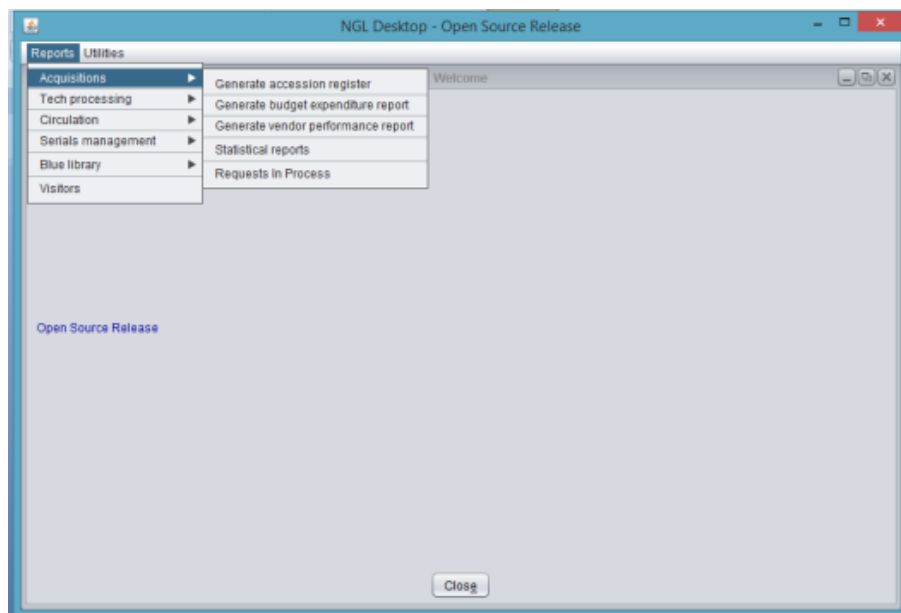
Figure 9: ILMS WebOPAC features



## Reports

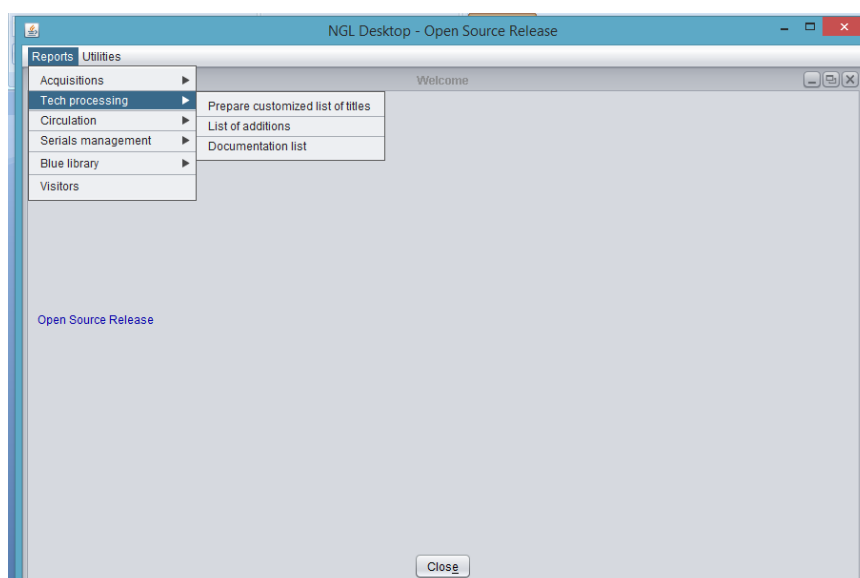
- Acquisitions
  - Accession register
  - Budget expenditure
  - vendor performance

Figure 10: ILMS Reports Modules



- Technical Processing
  - Customized list of titles
  - List of new arrivals
  - Documentation list

Figure 11: ILMS WebOPAC



- Circulation
  - Stock verification
  - Checked out material details
  - Current reservations
  - Detailed Circulation Transaction
  - Overdue material
  - Patron List (Users List)
  - Items reported lost
  - Daily Circulation Transaction
  - Items under binding

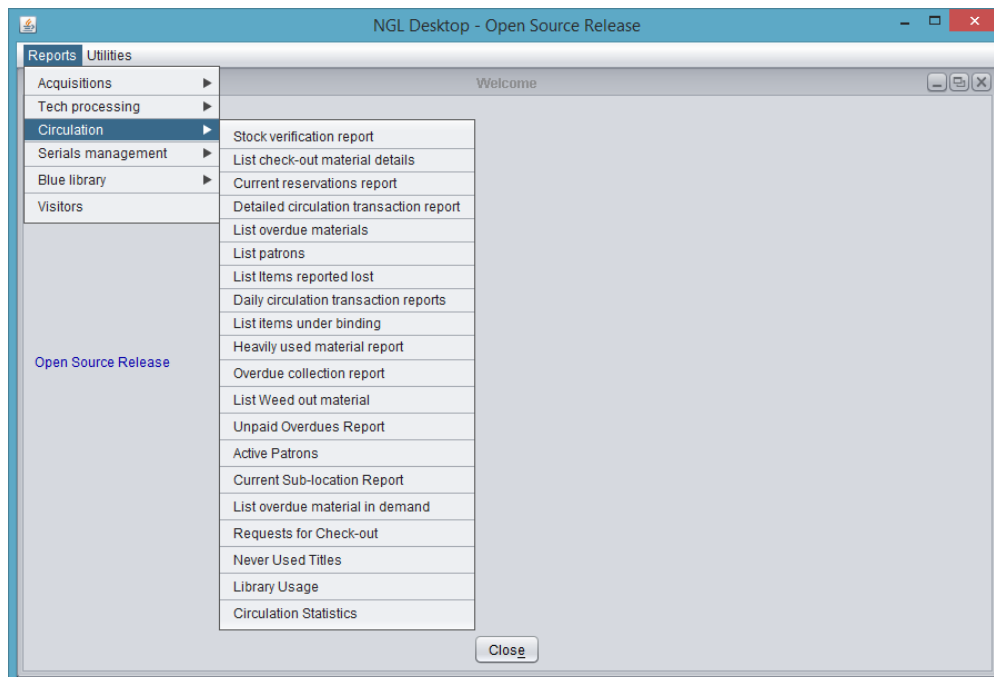


Fig 12: ILMS Reports Circulation module

- Serials management
  - Current subscriptions
  - Duplicate issues
  - Missing issues
  - Unfulfilled subscriptions
  - Current arrivals
  - Budget expenditure
  - List of subscriptions



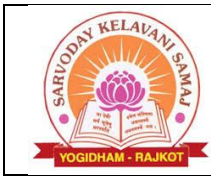


Figure 13: ILMS Reports Serial Management module

