

**REPORT OF FEEDBACK ANALYSIS  
EVEN SEMESTERS-2017-18**

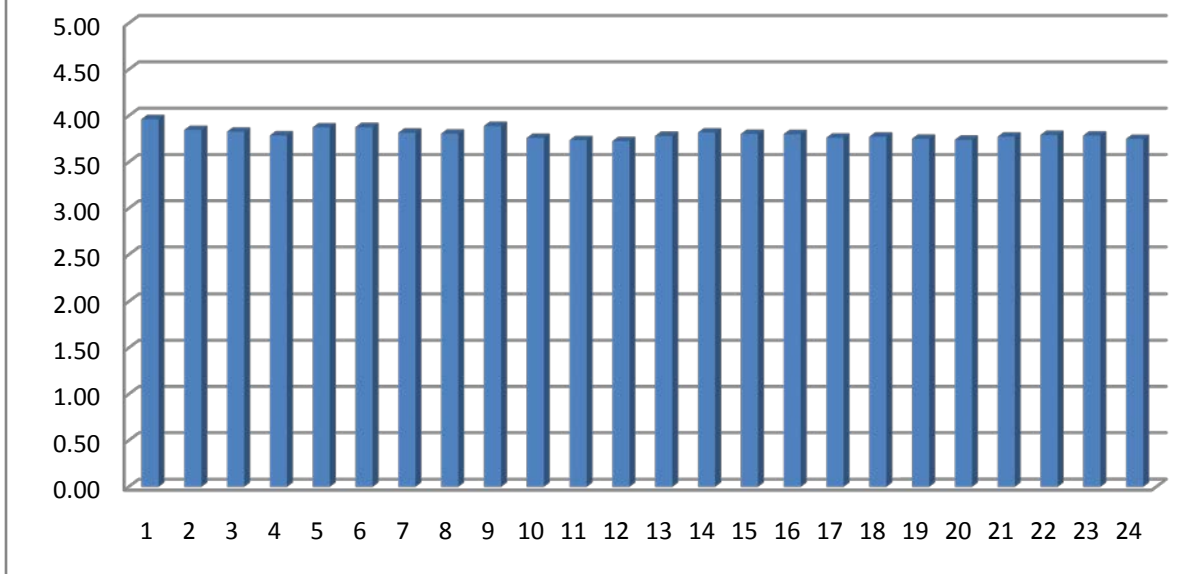
## Feedback analysis report

- In Even semesters, the college collects feedback from students on faculty members, theory and practical courses. In this feedback process **709** of UG students and **257** of PG students of various programs participated.

### 1. Consolidated Feedback Analysis Report for Faculty Handling the Courses (both Theory & Practical) -(UG & PG)

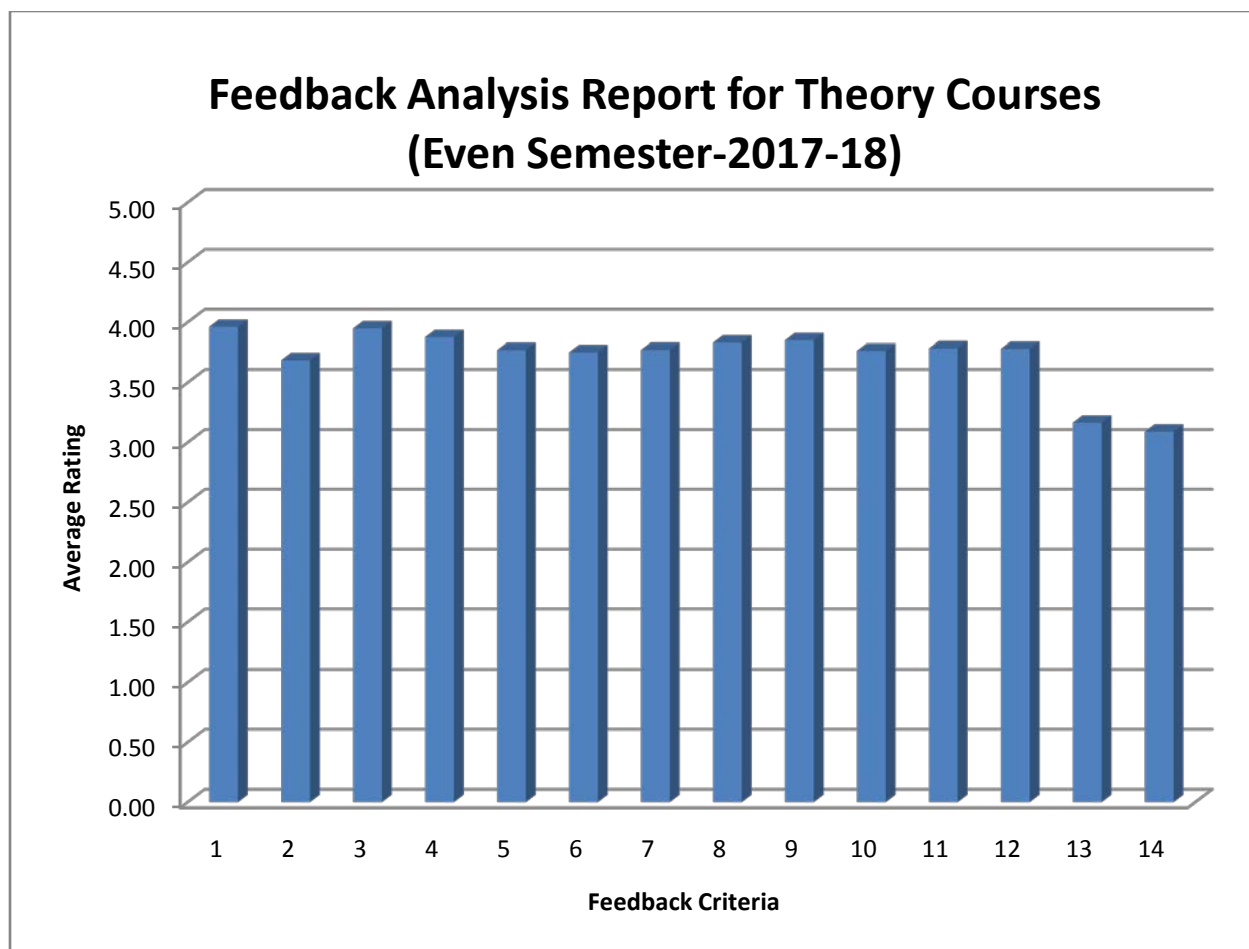
Feedback Part	Sr. No.	Feedback Criteria	Average Rating (Out of 5)
<b>Part-I</b>	1.	Punctuality of the teacher	3.96
	2.	Sincerity / commitment of the teacher	3.85
	3.	Communication skills of the teacher	3.83
	4.	Clarity of knowledge conveyed by the teacher	3.79
	5.	Ability to integrate content of course with other courses	3.87
	6.	Ability to integrate course with its applications	3.88
	7.	Accessibility of teacher in & out of the class	3.82
	8.	Interest generated by the teacher	3.81
	9.	Teaching-learning methods adopted by the teacher	3.89
	10.	Use of ICT (PPT/Video/lecturer/Software/Video conference /Virtual lab./Others)	3.76
	11.	Use of other methods (specify) eg. Model, chart, demo etc.	3.74
	12.	Your opinion on the handling by the teacher of the following assessment tools (Quiz/Surprise test/GD/Assignments Seminar/Others)	3.73
	13.	Provision of sufficient time for feedback	3.78
	14.	Overall rating	3.82
<b>Part-II</b>	15.	Preparation for Class	3.80
	16.	Syllabus Coverage	3.80
	17.	Encouragement of students participation in the class	3.76
	18.	Type of internal assessment conducted	3.77
	19.	Type of assignment given	3.75
	20.	Discussion of assignment with you	3.74
	21.	Extent of availability of material for prescribed reading	3.77
	22.	Helpfulness of teacher in guiding / advising	3.79
	23.	Feedback on performance in test	3.79
	24.	Frequency of feedback on performance in test	3.75

## Feedback Analysis Report for Faculty Handling the Courses (Even Semester-2017-18)



### 2. Consolidated Feedback Analysis Report for the Theory Courses- (UG & PG)

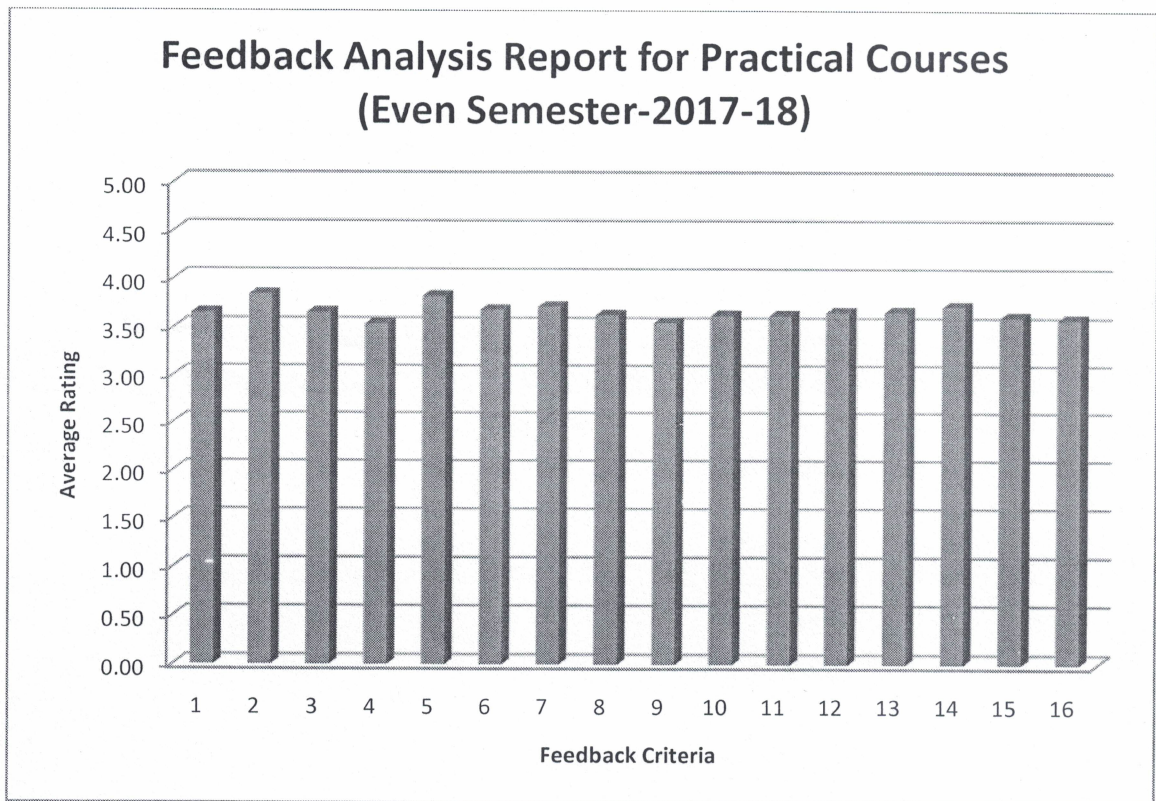
Feedback Part	Sr. No.	Feedback Criteria	Average Rating (Out of 5)
Part-I	1.	Relevance of the course to your programme	3.96
	2.	Relevance of the course to real-life situations/applicability	3.69
	3.	Positioning of the course in this semester	3.95
	4.	Depth of the syllabus of the course	3.88
	5.	Clarity and relevance of text books	3.77
	6.	Clarity and relevance of reference books / journals	3.75
	7.	Its relevance as a fundamental / Application-oriented course	3.77
	8.	Understanding of the course in relation to practical, if any	3.83
	9.	Facilitation of learning of the course by the teacher	3.85
	10.	Information on additional learning / reading resources given by teacher	3.76
	11.	Learning value in terms of (Information/Knowledge /Concepts/Analytical abilities/Physical/Technical skills/Application)	3.78
	12.	Overall rating of the course	3.78
Part-II	13.	Efforts required by Students to understand the course	3.17
	14.	Efforts required after class hours for self study of the course	3.09



### 3. Consolidated Feedback Analysis Report for the Practical Courses- (UG & PG)

Feedback Part	Sr. No.	Feedback Criteria	Average Rating (Out of 5)
Part-I	1.	Relevance of the course to your programme	3.65
	2.	Number of experiments	3.84
	3.	Relevance of the course to real-life situations/applicability	3.66
	4.	Learning value in terms of (Information/Knowledge/Concepts /Analytical abilities/Physical/Technical skills /Application)	3.54
	5.	Conduct of experiments with concepts & inference by the teacher	3.82
	6.	Depth of the syllabus of the course	3.68
	7.	Clarity & relevance of lab manual or procedures	3.72
	8.	Its relevance as a fundamental / Application-oriented course	3.63
	9.	Laboratory facilities	3.55
	10.	Adequacy of equipment	3.63

11.	Working condition of equipment	3.63
12.	Positioning of the course in this semester	3.66
13.	Punctuality of evaluation of experiments	3.66
14.	Conduct of CIE tests	3.72
15.	Relevance of components of CIE	3.61
16.	Technical support by lab assistant	3.59



*Aspatd*  
**Co-ordinator,**  
**Feedback Committee**  
**Shri Manibhai Virani & Smt. Navalben**  
**Virani Science College, Rajkot**

*Jammy*  
**IQAC Co-ordinator,**  
**Shri Manibhai Virani & Smt. Navalben**  
**Virani Science College, Rajkot**

*bc*  
**Principal**  
**Shri Manibhai Virani and**  
**Smt. Navalben Virani Science College**  
**(Autonomous) Rajkot**

